

# Level 7

**\*\* ADDITION TO ALL PAST LEVELS \*\***

**\*\* Be sure to review past levels when studying \*\***

## Chords

**Augmented chord** is a triad with a sharpened fifth



**Half diminished chords** (aka minor seven flat five chords) are built as a minor chord with a flat fifth



**Fully diminished chords** (aka diminished seventh) add a minor third above a diminished triad



# Modulation

- the change of key within a composition
- **pivot chord modulation**: a common chord

A change of tonal center within a composition, reinforced by a cadence in the new key

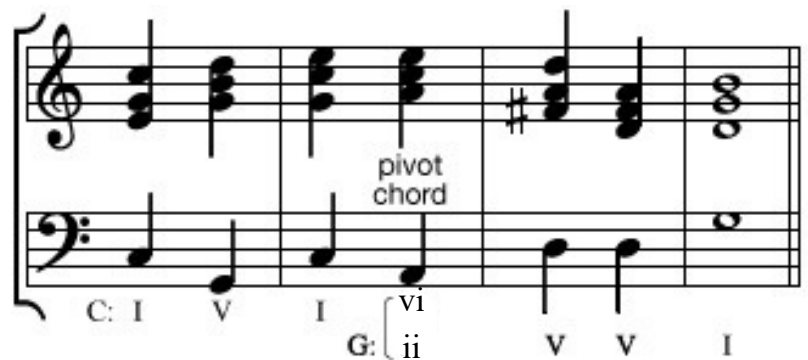
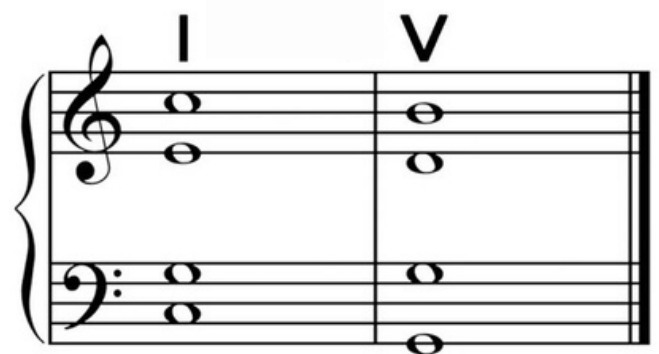


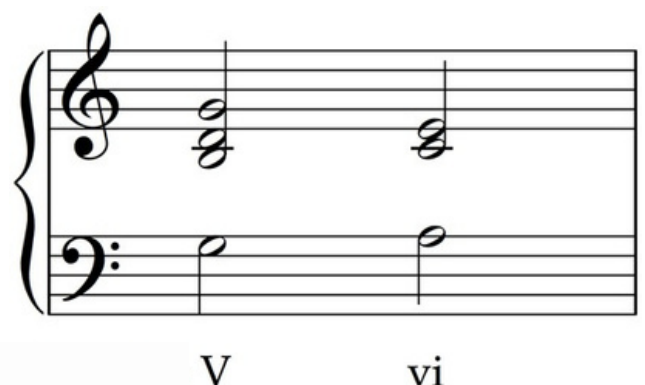
image from Britannica

## Cadences

**Half (I-V) cadence**  
(aka an imperfect cadence or semi cadence) is any cadence ending on V



**Deceptive (V-vi) cadence** begins with V but does not end on the tonic.



# Transposition

To restate a song's melody and chords at a different pitch level

Treble Clef

Bass Clef

Alto Clef

Tenor Clef

The diagram illustrates transposition across four different clefs. Each staff shows a sequence of eight notes, with the first and last notes circled to indicate the range of the transposition. The notes are as follows:

Clef	Note 1 (Circled)	Note 2	Note 3	Note 4	Note 5	Note 6	Note 7	Note 8 (Circled)
Treble Clef	C4	D4	E4	F4	G4	A4	B4	C5
Bass Clef	C3	D3	E3	F3	G3	A3	B3	C4
Alto Clef	C4	D4	E4	F4	G4	A4	B4	C5
Tenor Clef	C4	D4	E4	F4	G4	A4	B4	C5